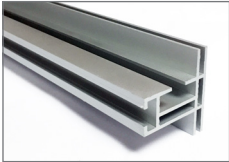
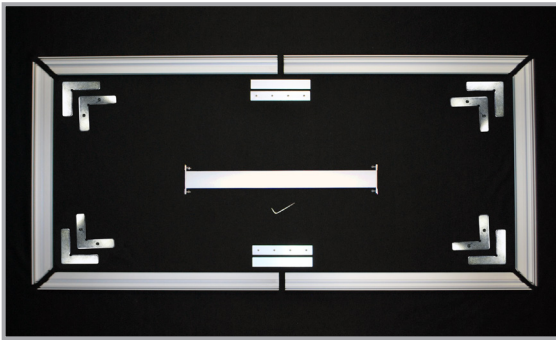


PROFILE 50 FRAME ASSEMBLY WITH SPLICE AND SUPPORT BAR

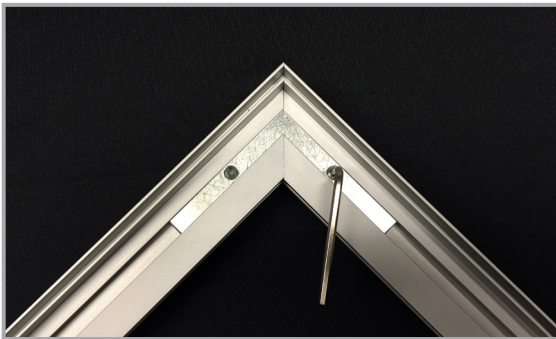


Profile 50

Step 1: Place the frame pieces in front of you, groove side up.



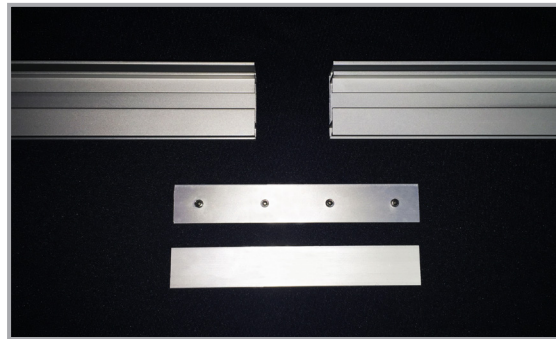
Step 4: With corner pieces fitting together evenly, tighten corner connectors with allen wrench.



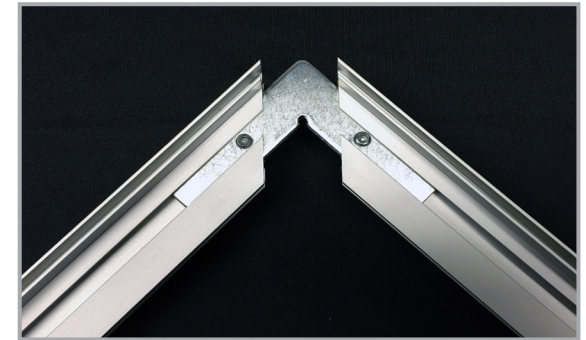
Step 2: Stack corner connectors (smooth piece on bottom) and insert into the grooves of two of the corner frame pieces.



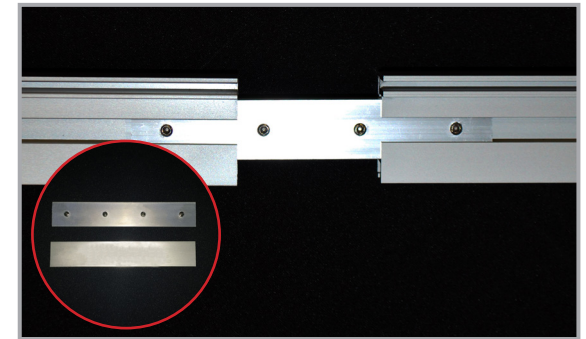
Step 5: Lay out splice frame pieces with splice connectors.



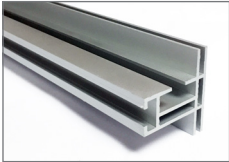
Step 3: Slide corner connectors into the grooves of remaining corner frame pieces.



Step 6: Stack splice connectors (smooth piece on bottom) and slide into groove of spliced frame pieces. If not sliding easily, loosen set screws and slide rest of way.

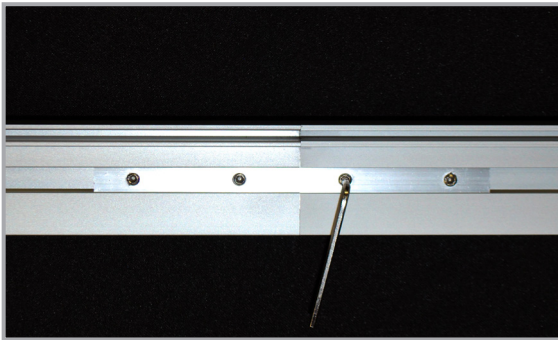


PROFILE 50
FRAME ASSEMBLY WITH SPLICE AND SUPPORT BAR

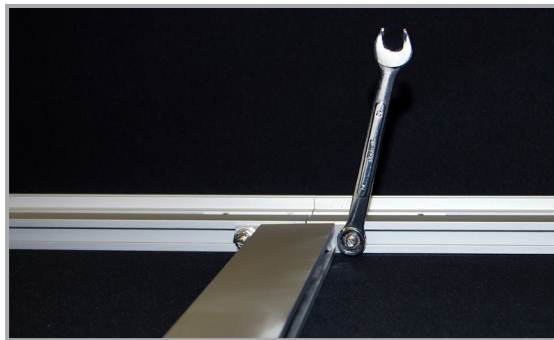


Profile 50

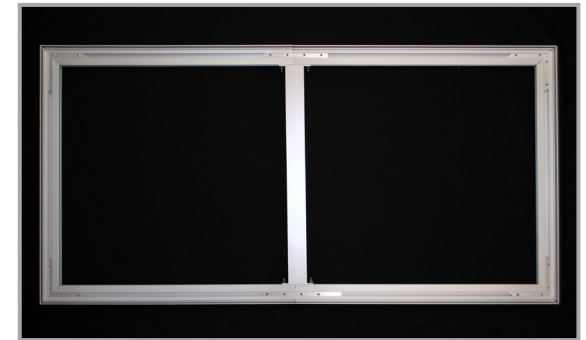
Step 7: Butt spliced pieces of frame tightly together and use allen key to tighten set screws on splice connector.



Step 8: Attach support bar in groove and tighten nuts with wrench. For large frames with multiple support bars, space evenly.



Step 9: Your frame is now assembled.



Thank you for your business. Need assistance? Watch our installation videos at www.matrixframe-usa.com/videos or call us at 704-393-2881.